

Home Health Lunch and Learn: Homebound Documentation

4/11/2024

Closed Captioning: *Auto-generated closed captioning is enabled in this course and is at best 70-90% accurate. Words prone to error include specialized terminology, proper names and acronyms.*

Today's Presenter

Provider Outreach and Education
Consultant

- Madeleine Collins, RN





Disclaimer

National Government Services, Inc. has produced this material as an informational reference for providers furnishing services in our contract jurisdiction. National Government Services employees, agents, and staff make no representation, warranty, or guarantee that this compilation of Medicare information is error-free and will bear no responsibility or liability for the results or consequences of the use of this material. Although every reasonable effort has been made to assure the accuracy of the information within these pages at the time of publication, the Medicare Program is constantly changing, and it is the responsibility of each provider to remain abreast of the Medicare Program requirements. Any regulations, policies and/or guidelines cited in this publication are subject to change without further notice. Current Medicare regulations can be found on the [CMS website](#).



Recording

Attendees/providers are never permitted to record (tape record or any other method) our educational events. This applies to webinars, teleconferences, live events and any other type of National Government Services educational events.

Objectives

Define what the confined to the home criteria is for Medicare home health eligibility

Learn what medical reviewers are looking for in documentation

Review examples of documentation to support homebound status



Agenda

Confined To The Home

Homebound Documentation

Resources

Q&A

The background is a solid dark blue. On the right side, there are large, overlapping, semi-transparent geometric shapes in a lighter shade of blue, resembling stylized letters or abstract forms. In the bottom-left corner, there is a pattern of small, light blue dots arranged in a grid-like fashion.

Confined To The Home

Homebound Status

- **Criteria One** (One standard must be met):
 - Because of illness or injury, need the aid of supportive devices such as crutches, canes, wheelchairs and walkers; the use of special transportation; or the assistance of another person to leave their place of residence
or
 - Have a condition such that leaving the home is medically contraindicated
- **Criteria Two** (Both standards must be met):
 - There must exist a normal inability to leave home ****and****
 - Leaving home must require a considerable and taxing effort



Homebound Status

■ Criteria One

- Verify the type of support and/or supportive device or assistance required to assist the patient in leaving home
 - ✓ Example: patient uses walker or another individual to assist with ambulation
- or-
- Verify the reason why leaving home is medically contraindicated
 - ✓ Example: the patient is immunocompromised

Homebound Status

■ Criteria Two

- Explain the patient's normal inability to leave home within the medical record documentation
 - ✓ Example: identify the patient's "normal ability" prior to the current illness or injury and compare and contrast prior level of function to their current level of function

-and-

- Describe the patient's taxing effort
 - ✓ Example: utilize the patient's medical record to identify patient specific challenges

Homebound Status



Infrequently

For other unique or infrequent events:
Funeral, graduation, hair care



For Periods of Relatively Short Duration

For religious services



To Receive Health Care Services

For medical appointments/treatments
To attend adult daycare centers for
medical care

Homebound Documentation



Homebound Documentation

- Provide documentation regarding the patient's current health status
 - Examples:
 - ✓ Prior level of function
 - ✓ Current diagnosis
 - ✓ Duration of condition
 - ✓ Clinical course (worsening or improving)
 - ✓ Prognosis
 - ✓ Nature and extent of functional limitations
 - ✓ Therapeutic interventions and results

Homebound Documentation

- Pain medications (causing drowsiness)
- Rest periods (frequent rest periods with ambulation)
- Oxygen (desaturation with ambulation, shortness of breath)
- Incontinence (acute/chronic, new Foley catheter, briefs, irritation)
- Confusion (acute/chronic, familiarity with current living accommodations)
- Safety concerns (related to recent falls, familiarity with current living accommodations, confusion)
- Alternative accommodations (is the patient currently in their own home or are they now residing elsewhere; moved in with family member, new surroundings)

Homebound Documentation

- Documentation must:
 - **Include** information about the injury/illness and the type of support and/or supportive device/assistance required for illness/injury to assist the patient in leaving home
 - **Explain** in detail how the patient's current condition makes leaving home medically contraindicated
 - **Clarify** exactly the distinct difference in the patient's normal ability versus their normal inability
 - **Describe** exactly what effects are causing the considerable and taxing effort for this patient when leaving home

Homebound Documentation

- Declaring standardized phrases reflecting the patient's condition is insufficient, by itself, to demonstrate the criteria has been met.
 - **Examples:**
 - ✓ "It's a taxing effort for the patient to leave home."
 - ✓ "The patient leaves home for periods of short duration."
 - ✓ "The patient leaves home infrequently."
 - ✓ "The patient leaves home for religious services."
 - ✓ "The patient has a normal inability to leave their home."

Homebound Documentation

■ Poor Example of Homebound Status

- “Decreased endurance/mobility, unsteady gait, pain”

■ Better Example of Homebound Status

- “Patient with multiple comorbidities including chronic heart failure and end stage kidney disease status post renal transplant with recent worsening dizziness and impaired functional mobility secondary to debilitated state post viral infection. Patient currently using rollator walker and is very unsteady getting up from the chair with extreme SOB with minimal exertion.”

Homebound Documentation

■ Poor Example of Homebound Status

- “Unstable blood sugars”

■ Better Example of Homebound Status

- “FBS 350 without symptoms. Insulin dose of 18 units of 70/30 taken. BS at lunchtime was 45 and patient c/o confusion, dizziness, headache, sweating, and trembling all over and unsteady gait. States this is pattern for last two weeks. Verbalizes concern and fear of fainting or falling.”

Homebound Documentation

■ Poor Example of Homebound Status

- “Confusion, poor cognition, requires assistance to leave home”

■ Better Example of Homebound Status

- “Patient is homebound due to end-stage dementia and cannot be left unattended due to wandering behaviors and extremely poor cognition. Patient has wandered away from home and been lost in the past resulting in injury. The patient is now too disoriented to safely leave home alone and requires frequent prompting and redirection of another person to keep the patient from harm. The patient also exhibits poor balance and falls easily if not supported by another person during all attempts at ambulation.”

References

References

- [CMS Internet Only Manual \(IOM\) Pub. 100-02, Medicare Benefit Policy Manual Chapter 7 – Home Health Services Sections 20-50.1](#)
- [CMS Internet Only Manual \(IOM\) Pub. 100-04, Medicare Claims Processing Manual Chapter 10 - Home Health Agency Billing](#)
- [CMS Internet Only Manual \(IOM\) Pub. 100-08, Medicare Program Integrity Manual Chapter 6 - Medicare Contractor Medical Review Guidelines for Specific Services](#)
- [42 Code of Federal Regulations \(CFR\) Section 484 - Home Health Services](#)
- [NGSMedicare.com](#)
 - Job Aids
 - Webinars
 - Medicare University Computer Based Training (CBT)

Connect with us
on Social Media



[YouTube Channel](#)

Educational Videos

medicare **mobile**

Text NEWS to 37702; Text GAMES to 37702



www.MedicareUniversity.com

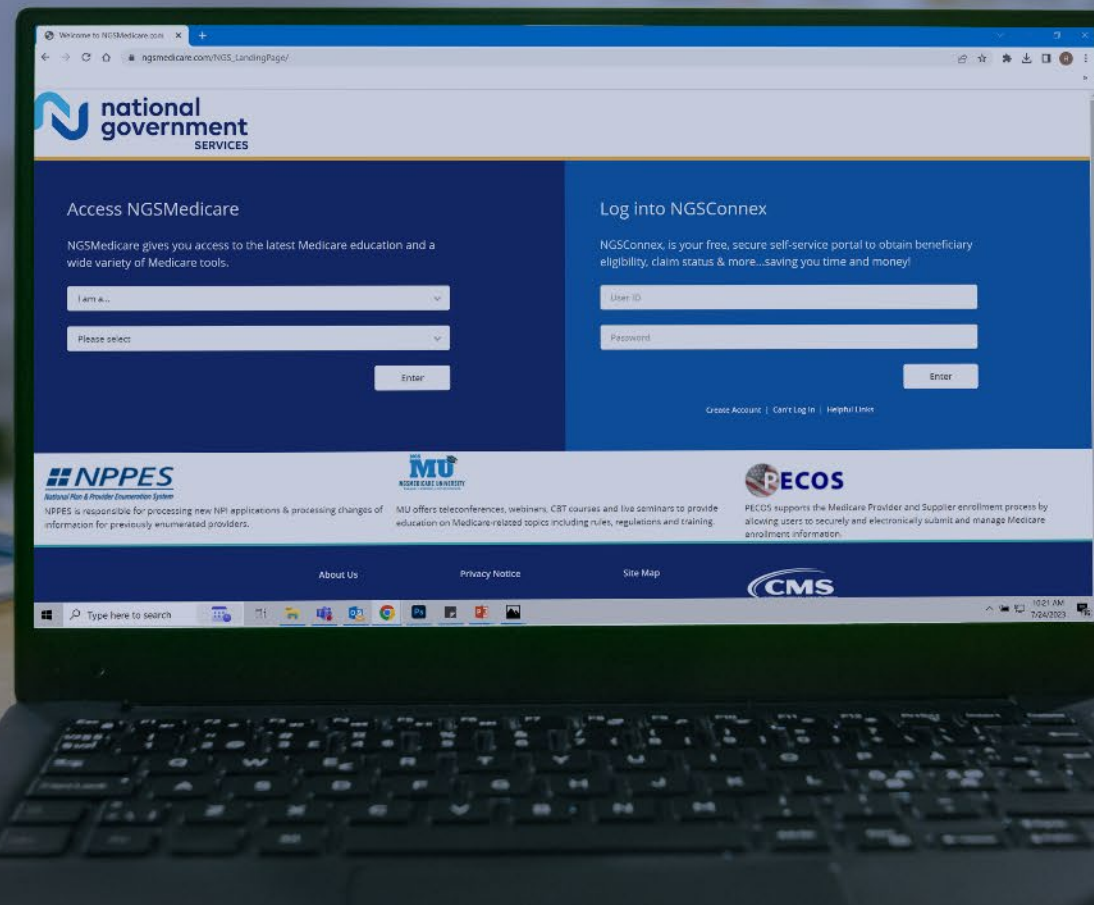
Self-paced online learning



[LinkedIn](#)

Educational Content

Find us online



www.NGS Medicare.com

Online resources, event calendar,
LCD/NCD, and tools



IVR System

The interactive voice response system
(IVR) is available 24-hours a day, seven
days a week to answer general inquiries



[NGSConnex](#)

Web portal for claim information



[Sign up for Email Updates](#)

Subscribe for Email updates at the top
of any NGS Medicare.com webpage to
stay informed of news

Questions?

Thank you! A follow-up email will be sent to attendees with the Medicare University Course Code.