

# Care Management: Cognitive Assessment

10/3/2023

**Closed Captioning:** *Auto-generated closed captioning is enabled in this course and is at best 70-90% accurate. Words prone to error include specialized terminology, proper names and acronyms.*



## Disclaimer

National Government Services, Inc. has produced this material as an informational reference for providers furnishing services in our contract jurisdiction. National Government Services employees, agents, and staff make no representation, warranty, or guarantee that this compilation of Medicare information is error-free and will bear no responsibility or liability for the results or consequences of the use of this material. Although every reasonable effort has been made to assure the accuracy of the information within these pages at the time of publication, the Medicare Program is constantly changing, and it is the responsibility of each provider to remain abreast of the Medicare Program requirements. Any regulations, policies and/or guidelines cited in this publication are subject to change without further notice. Current Medicare regulations can be found on the [CMS website](#).

# Today's Presenter

## Provider Outreach and Education Consultant

- Nathan Kennedy



- Care Management Team

- Nathan Kennedy
- Christine Obergfell
- Jennifer Lee
- Lori Langevin
- Michelle Coleman
- Carleen Parker





## Recording

Attendees/providers are never permitted to record (tape record or any other method) our educational events. This applies to webinars, teleconferences, live events and any other type of National Government Services educational events.

## Objective

Our objective today is to help providers become familiar with the cognitive care service, explain billing and coding parameters for the service, and provide resources to help after the session.



## Care Management Continued Series Agenda

---

- Cognitive Assessment and Care Plan Services Overview
- Resources

# CMS 2021 Final Rule

- CPT code 99483 includes the same elements included in the Level 5 E/M service CPT code 99215, such as, a comprehensive history, comprehensive exam, and high complexity medical decision-making
- CPT code 99215 is included in the definition of primary care services used for assignment
- Accordingly, we noted in the proposed rule that we believe it would be appropriate to also include CPT code 99483 in the definition of primary care services used for assignment under section 425.400(c) for the performance year starting on 1/1/2021, and subsequent performance years

# Who Should Get An Assessment

- Patients with a detected cognitive impairment such as dementia or Alzheimer's
- Patients with suspected cognitive issues

# Cognitive Assessment and Care Plan Services

- Medicare covers a visit for a cognitive assessment, and development of a plan of care for Medicare patients who show signs of cognitive impairment during their annual wellness visit or routine office visit



# Who Can Provide Cognitive Assessment

- Physicians (MD and DO)
- Nurse Practitioners
- Clinical Nurse Specialists
- Physician Assistants

# Where Can Assessment Be Performed

- Office
- Outpatient setting
- Private residence
- Care facility
- Rest home
- Telehealth

# Initial Plans to Address

- Neuropsychiatric symptoms
- Neurocognitive symptoms
- Functional limitations

# Cognitive Assessment and Care Plan Services - Coding and Payment – Prior to 2023

- 99483
  - 50 minutes face-to-face with the patient and Independent Historian, on the date of the encounter
    - ✓ Definition of Independent Historian is provided by the AMA on page 15 of 2022 CPT manual
- CMS raised reimbursement rate beginning 2021
  - \$282 (geographic adjustments apply)
  - Deductible and coinsurance apply



# 2023 Cognitive Care Revisions

- 99483
  - 60 minutes face-to-face with the patient and Independent Historian, on the date of the encounter
    - ✓ Definition of Independent Historian is provided by the AMA on page 11 of 2023 CPT manual
- CMS raised reimbursement rate beginning 2021
  - 2023 = \$320.68 National (geographic adjustments apply)
  - Deductible and coinsurance apply

# Services not Separately Billable

- When 99483 is billed, these are not separately billable
  - E/M services
  - Psychiatric diagnostic procedures
  - Brief emotional/behavioral assessment
  - Psychological/neuropsychological test administration
  - Health risk assessment administration
  - Medication therapy management services

# Services Included With 99483

- Examine the patient with a focus on observing cognition
- Record and review the patient's history, reports, and records
- Conduct a functional assessment of basic and instrumental activities of daily living, including decision-making capacity
- Use standardized instruments for staging of dementia like the Functional Assessment Staging Test and Clinical Dementia Rating
- Reconcile and review for high-risk medications, if applicable
- Use standardized screening instruments to evaluate for neuropsychiatric and behavioral symptoms, including depression and anxiety
- Conduct a safety evaluation for home and motor vehicle operation
- Identify social supports including how much caregivers know and are willing to provide care
- Address advance care planning and any palliative care needs

# Medicare Resources

- [Cognitive Assessment & Care Plan Services](#)
- [CMS Letter to Providers](#)
- Information for Persons with Medicare
  - [Medicare.gov: Cognitive assessment & care plan services](#)



# Additional Resources

- Alzheimer's Association: [Medicare coverage of care planning for people with cognitive impairment](#)
- [Alzheimer's Impact Movement](#)
- Physicians Practice: [How to discuss cognitive screenings with Medicare patients](#)

Connect with us  
on Social Media



[YouTube Channel](#)  
Educational Videos

medicare **mobile**

Text NEWS to 37702; Text GAMES to 37702

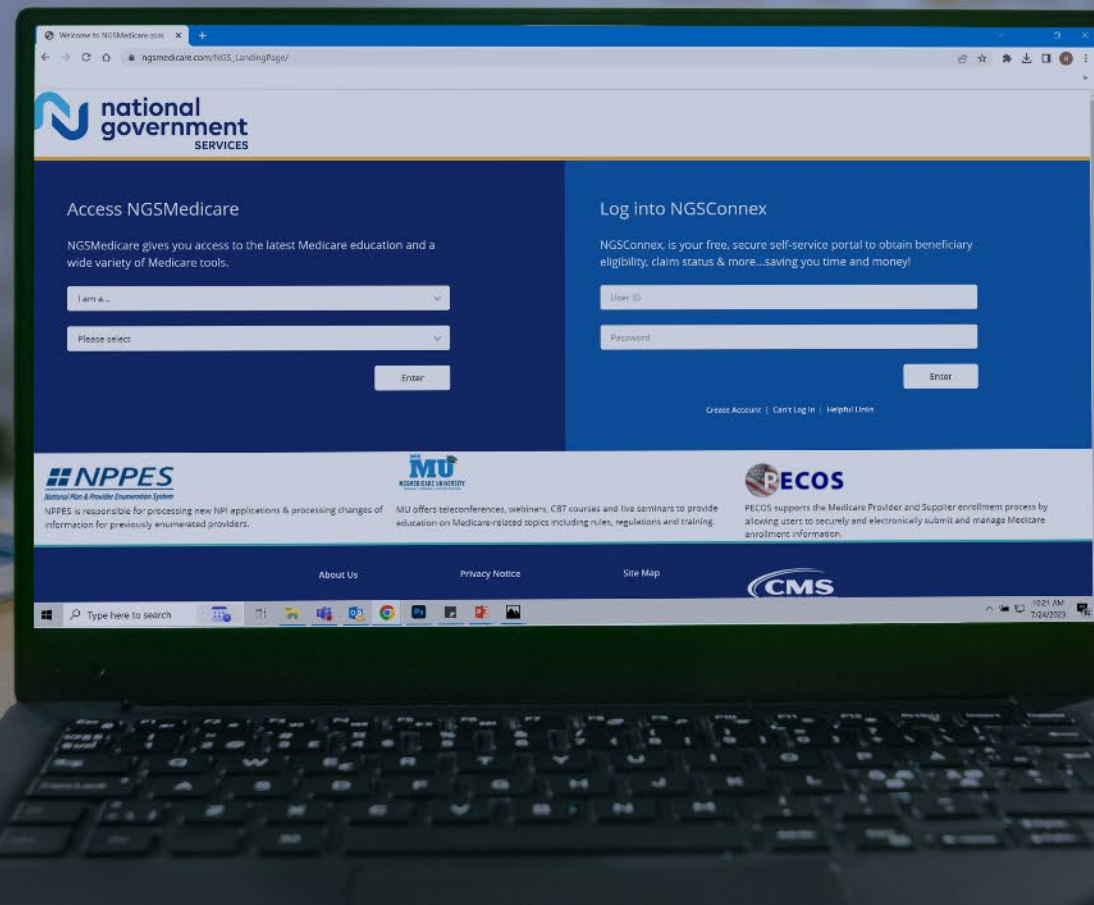


[www.MedicareUniversity.com](http://www.MedicareUniversity.com)  
Self-paced online learning



[LinkedIn](#)  
Educational Content

# Find us online



[www.NGSMedicare.com](http://www.NGSMedicare.com)

Online resources, event calendar,  
LCD/NCD, and tools



IVR System

The interactive voice response system  
(IVR) is available 24-hours a day, seven  
days a week to answer general inquiries



[NGSConnex](#)

Web portal for claim information



[Sign up for Email Updates](#)

Subscribe for Email updates at the top  
of any NGSMedicare.com webpage to  
stay informed of news

# Questions?

Thank you! A follow-up email will be sent to attendees with the Medicare University Course Code.