

Diabetes Self-Management Training, Diabetes Screening Tests and Medical Nutrition Therapy

11/9/2023

Closed Captioning: *Auto-generated closed captioning is enabled in this course and is at best 70-90% accurate. Words prone to error include specialized terminology, proper names and acronyms.*

Today's Presenters



Provider Outreach and Education Consultants

- Michelle Coleman, CPC
- Gail Toussaint



Disclaimer

National Government Services, Inc. has produced this material as an informational reference for providers furnishing services in our contract jurisdiction. National Government Services employees, agents, and staff make no representation, warranty, or guarantee that this compilation of Medicare information is error-free and will bear no responsibility or liability for the results or consequences of the use of this material. Although every reasonable effort has been made to assure the accuracy of the information within these pages at the time of publication, the Medicare Program is constantly changing, and it is the responsibility of each provider to remain abreast of the Medicare Program requirements. Any regulations, policies and/or guidelines cited in this publication are subject to change without further notice. Current Medicare regulations can be found on the [CMS website](#).



Recording

Attendees/providers are never permitted to record (tape record or any other method) our educational events. This applies to webinars, teleconferences, live events and any other type of National Government Services educational events.

Objective

After the session, attendees will be able to

- Discuss Medicare coverage of diabetes screening tests, DSMT and MNT
- Ensure that they are properly billing Medicare for these services
- Know where to find more information



Agenda

Diabetes Self-Management Training (DSMT)

Michelle Coleman

Diabetes Screening Tests

Michelle Coleman

Medical Nutrition Therapy (MNT)

Gail Toussaint

Resources

Gail Toussaint

DSMT

Overview

Education of beneficiaries for successful self-management of diabetes

Beneficiary must meet coverage criteria

Must be provided by designated certified provider within accredited DSMT program



Telehealth

- All MNT and DSMT services (with the exception of code G0271) are payable via telehealth
- Through the end of CY 2023, DSMT and MNT providers should continue to bill for these services when furnished remotely in the same way they have been during the COVID-19 PHE

Certified Provider

- Physician or other individual or entity that
 - Provides outpatient self-management training services as well as other items and services for which payment may be made under the Medicare Program
 - Meets certain quality standards
 - All providers/suppliers billing Medicare for other individual services considered certified
 - RNs and pharmacists can furnish the training; however, they are not eligible for Medicare enrollment. Must work with another certified provider to bill on his/her behalf
 - DMEPOS suppliers
 - ✓ Must obtain a provider number from the A/B MAC (B) in order to bill for DSMT
- Registered dietitians are eligible to bill on behalf of an entire DSMT program (must have a Medicare provider number – specialty 71)
 - An RD may be the sole provider of the DSMT service

DSMT Program Accreditation

- Must be accredited as meeting quality standards by CMS approved national accreditation organization
 - ADA
 - ADCES
- Must submit accreditation certificate to local Medicare contractor's provider enrollment department (NGS)
- [Diabetes Self-Management Training \(DSMT\) Accreditation Program](#)
- Direct questions to CMS about the DSMT Accreditation Program DSMT Accreditation email box
 - DSMTAccreditation@cms.hhs.gov

Qualified DSMT Program

- Includes the following services
 - Instruction in self-monitoring of blood glucose
 - Education about diet and exercise
 - Insulin treatment plan developed specifically for patient
 - Motivation for beneficiaries to use self-management skills

Verifying DSMT and MNT Hours

- NGSConnex will provide the following information
 - Initial date of service
 - Minutes of initial time remaining
 - Minutes of follow-up time remaining

| Diabetes Self Management Training (DSMT) | | |
|--|-----------------------------------|-------------------------------------|
| Initial Date of Service | Minutes of Initial Time Remaining | Minutes of Follow-up Time Remaining |
| | 0 | 120 |
| 1 to 1 of 1 items | | |

Verifying DSMT and MNT Hours Cont.

- IVR will provide the following information (Special Services – Touchtone 6)
 - Initial date of service
 - Minutes of initial time remaining
 - Minutes of follow-up time remaining
 - ✓ **Note:** eligibility information for DSMT and MNT is based on today's date

Beneficiary Eligibility

- Coverage of services only for beneficiaries diagnosed with diabetes mellitus
 - Fasting blood sugar ≥ 126 mg/dL on two different occasions
 - Two-hour post-glucose challenge ≥ 200 mg/dL on two different occasions or
 - Random glucose test over 200 mg/dL for a person with symptoms of uncontrolled diabetes
 - A1c is not acceptable for supporting a diagnosis of diabetes

Coverage/Documentation

- Requirements for coverage

- Ordered by treating physician or qualified NPP managing beneficiary's diabetic condition
- Order/referral must include
 - ✓ Statement signed by physician or qualified NPP that service needed
 - ✓ Number of initial or follow-up hours of training ordered -can order less than ten hours but not exceed ten hours
 - ✓ Topics to be covered in training
 - ✓ Individual or group training determination

Coverage/Documentation-Cont.

- Plan of care required to be documented in patient's medical record
 - Original order by treating physician/NPP
 - ✓ Including any special conditions noted by physician
 - Must show services reasonable/medically necessary
- When original order changed, order/referral must be
 - Signed by treating physician/NPP
 - Maintained in patient's file in DSMT program records

Initial DSMT Training

- 12-month period following initial certification
 - Beneficiary has not previously received initial or follow-up training (G0108 or G0109)
 - Furnished within continuous 12-month period
 - Does not exceed total of ten hours
 - ✓ Any combination of 30-minute increments
 - Training usually furnished in group setting
 - ✓ Not all need to be Medicare beneficiaries
 - One hour of individual training may be used for any part, including insulin training

Individual DSMT Training-Cont.

- Allowable when
 - No group session available within two months of date training ordered
 - Patient has special needs resulting from conditions such as severe vision, hearing or language limitations, or other such special conditions that will hinder effective participation in group training session
 - Physician orders additional insulin training
 - Need for individual training identified by physician or qualified NPP in referral

Follow-Up DSMT Training

- Based on 12-month calendar year after completion of full ten hours of initial training
- No more than two hours of individual or group training per year
 - Furnished in increments of no less than 30 minutes
 - Group training consists of two to 20 individuals
 - ✓ Not all need to be Medicare beneficiaries
- Documentation of diabetes diagnosis within patient's medical record by treating physician or NPP

Follow-Up DSMT Training-Cont.

- Follow-up training for subsequent years based on 12-month calendar year after completion of full ten hours of initial training
 - If beneficiary exhausts ten hours in initial year, eligible for follow-up training in next calendar year
 - If beneficiary does not exhaust ten hours in initial year, has 12 continuous months to exhaust initial training before two hours of follow-up training available

Follow-Up Training Example #1

- Beneficiary exhausts ten hours in the initial year (12 continuous months)
 - Receives first service in April 2021
 - Completes initial ten hours DSMT training in April 2022
 - Eligible for follow-up training in May 2022
 - ✓ 13th month begins subsequent year
 - Completes follow-up training in December 2022
 - Eligible for next year training in January 2023

Follow-Up Training Example #2

- Beneficiary exhausts ten hours within the initial calendar year
 - Receives first service in April 2021
 - Completes initial ten hours DSMT training in December 2021
 - Eligible for follow-up training in January 2022
 - Completes follow-up training in July 2022
 - Eligible for next year follow-up training in January 2023

Billing

- All Medicare providers representing accredited DSMT program can bill and receive payment for entire DSMT program
- Registered dietitians can bill for entire DSMT program-Must have a Medicare Provider Number
- Cannot submit claims for DSMT services as “incident to” services
 - However, a physician advisor for a DSMT program is eligible to bill for the DSMT service for that program

Cost-Sharing and Payment

- Patient cost-sharing
 - Coinsurance applied
 - Part B deductible applied
- Advance Beneficiary Notice of Noncoverage
 - Patient liable for services exceeding limited number of hours with referrals for DSMT
 - If no ABN issued in this situation, provider liable
- Medicare payment
 - Claims paid under MPFS

Billing Tips

- DSMT benefit stand alone billable service separate from IPPE
- DSMT and MNT benefits allowed for same beneficiary in same year but not on same day
 - Requires separate referrals from physicians
- Billing an E/M code is not mandatory before billing the DSMT procedure codes
- Do not use E/M codes in lieu of HCPCS codes G0108 and G0109

Common Claim Denial Reasons

- Beneficiary exceeded ten-hour training limit
- Physician or qualified NPP did not order training
 - No proof of order in medical record
- Individual furnishing DSMT not accredited by Medicare

Diabetes Screening Tests

Eligibility

- Two eligibility categories – patient must have risk factor or certain characteristics
- Patient has any of following risk factors
 - Hypertension
 - Dyslipidemia
 - Obesity (a body mass index greater than or equal to 30kg/m²)
 - Previous identification of an elevated impaired fasting glucose or glucose tolerance
- Or**
- Patient has at least two of following characteristics
 - Overweight (a body mass index greater than 25 but less than 30 kg/m²)
 - Family history of diabetes
 - Age 65 or older
 - History of gestational diabetes mellitus or delivery of baby weighing greater than nine pounds

Coverage

- Beneficiaries diagnosed with prediabetes
 - Maximum of two diabetes screening tests within 12-month period (but not less than six months apart)
- Beneficiaries previously tested but not diagnosed as prediabetic or who have never been tested
 - One diabetes screening test within 12-month period

Billing

- Applicable CPT codes
 - 82947 Glucose: quantitative, blood (except reagent strip)
 - 82950 Glucose: post glucose dose (includes glucose)
 - 82951 Glucose: tolerance test (GTT), three specimens (includes glucose)
- ICD-10-CM diagnosis code
 - Z13.1
 - See the [CMS ICD-10 web page](#) for individual CRs and the specific ICD-10-CM codes Medicare covers for this service
- When the beneficiary meets the definition of prediabetes, append modifier TS (follow-up service)
- No coinsurance or Part B deductible applied

Common Claim Denial Reasons

- Benefit maximum for this time period or occurrence has been reached
- This service is being denied because it has not been six months since last examination of this kind

Medical Nutrition Therapy

MNT Services

- The MNT benefit is a separate benefit from the DSMT benefit
- For disease management, covered MNT services include the following
 - An initial nutrition and lifestyle assessment
 - One-on-one nutritional counseling
 - Information regarding diet management
 - Follow up sessions to monitor progress

Eligibility

- Patient has diabetes, renal disease or received a kidney transplant within the last 36 months
- Not covered for patients receiving maintenance dialysis
- Physician referral
 - Must include diagnosis of diabetes or renal disease
- MNT services provided by
 - Registered dietitian or nutrition professional who meets provider qualification requirements (specialty code 71)
 - ✓ 42 CFR 410.134 – Provider Qualifications

Coverage

- MNT services
 - Three hours of one-on-one counseling for first year
 - ✓ Unused hours cannot be carried over
 - Two hours of coverage each subsequent year
 - ✓ Additional hours may be covered if medically appropriate
 - Patient eligibility provided via IVR and NGSConnex
- Provided either on individual or group basis
- Hours based on calendar year
- Every year, patient must have new physician referral for follow up hours

Example of MNT Hours Usage

- Physician issues a referral for three hours of MNT
 - Patient only uses two hours in November
 - Calendar year ends in December – if third hour is not used, it cannot be carried over into the following year
- Following year, patient is eligible for two follow-up hours (with a physician referral)
 - Every calendar year, patient must have a new referral for follow-up hours

Billing

■ Applicable CPT Codes

- 97802: Medical nutrition therapy; initial assessment and intervention, individual, face-to-face with the patient, each 15 minutes
- 97803: Medical nutrition therapy; reassessment and intervention, individual, face-to-face with the patient, each 15 minutes
- 97804: Medical nutrition therapy; group (two or more individual(s), each 30 minutes

Billing-Cont.

- Change in beneficiary's condition
 - G0270: Medical Nutrition Therapy; reassessment and subsequent intervention(s) following second referral in same year for change in diagnosis, medical condition or treatment regimen (including additional hours needed for renal disease), individual, face-to-face with the patient, each 15 minutes
 - G0271: Medical Nutrition Therapy; reassessment and subsequent intervention(s) following second referral in same year for change in diagnosis, medical condition or treatment regimen (including additional hours needed for renal disease), group (two or more individuals), each 30 minutes

Billing-Cont. 2

- ICD-10 diagnosis coding
 - See the [CMS ICD-10](#) web page for individual CRs and coding translations
- One unit per each increment
- Include NPI number of referring physician
 - Claim returned without NPI
- Copayment/coinsurance/deductible waived
- DSMT and MNT cannot be billed on the same date of service for the same patient

Common Claim Denial Reasons

- Beneficiary not qualified to receive benefit
- Individual provider of MNT services did not meet provider qualification requirements

References and Resources

DSMT and Diabetes Screening Test Resources

- [CMS IOM Publication 100-04, Medicare Claims Processing Manual, Chapter 18, Diabetes Self Management Training \(DSMT\) Services, Section 120 and Diabetes Screening, Section 90](#)
- [CMS IOM Publication 100-02, Medicare Benefit Policy Manual, Chapter 15, Section 300](#)
- MLN Matters® [MM11043: Revision of Definition of the Physician Supervision of Diagnostic Procedures, Clarification of DSMT Telehealth Services, and Establishing a Modifier for Expanding the Use of Telehealth for Individuals with Stroke](#)

MNT References

- [CMS IOM Publication 100-04, Medicare Claims Processing Manual, Chapter 4, Section 300 Medical Nutrition Therapy](#)
- [National Kidney Disease Education Program](#)
- MLN® Educational Tool [Medicare Preventive Services Quick Reference Chart](#)
- MLN® Fact Sheet [Medicare Diabetes Self-Management Training](#)

Questions?

Thank you! A follow-up email will be sent to attendees with the Medicare University Course Code.

Connect with us
on Social Media



[YouTube Channel](#)
Educational Videos

medicare **mobile**

Text NEWS to 37702; Text GAMES to 37702

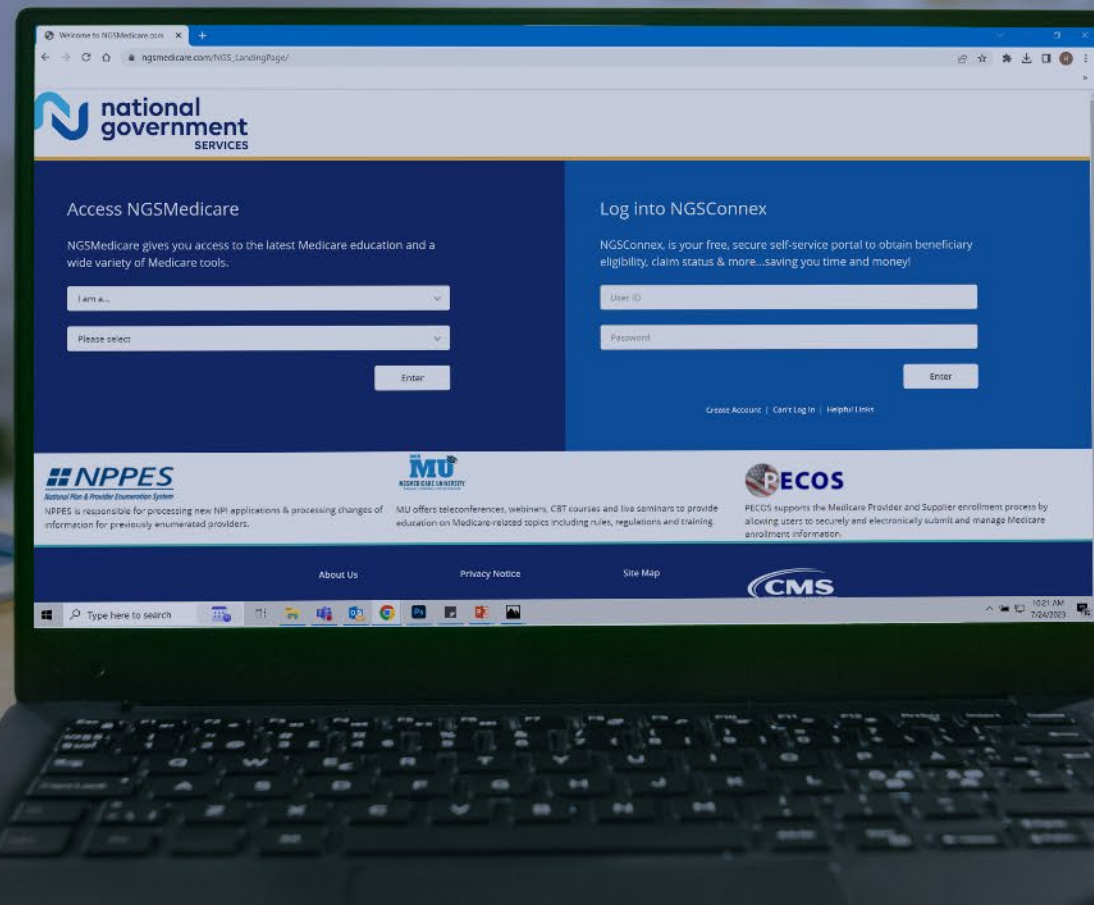


www.MedicareUniversity.com
Self-paced online learning



[LinkedIn](#)
Educational Content

Find us online



www.NGSMedicare.com

Online resources, event calendar, LCD/NCD, and tools



IVR System

The interactive voice response system (IVR) is available 24-hours a day, seven days a week to answer general inquiries



[NGSConnex](#)

Web portal for claim information



[Sign up for Email Updates](#)

Subscribe for Email updates at the top of any NGSMedicare.com webpage to stay informed of news